

ROSELAND UNIVERSITY PREP

CLASS OF 2016 ACCOMPLISHMENTS



Of the 98 graduates of the Class of 2016...

- **17%** are attending Sonoma State University
- **24%** are attending other CSU's (Cal Poly Pomona, Channel Islands, Chico, Dominguez Hills, East Bay, Fullerton, Los Angeles, Sacramento, San Jose)
- **12%** are attending a UC (Santa Barbara, Riverside, Davis, Merced, San Diego)
- **1%** are attending private or out of state universities (Illinois Wesleyan University)
- **2%** are attending a vocational school
- **39%** are attending SRJC or other JCs



College Attendance

Of the graduates...

- **55%** are attending a 4-year University
- **69%** met the subject requirements to attend a UC/CSU
- **61%** were accepted into a 4-year University
- **94%** are attending a 2 or 4-year University *National Average: 51%*
- **396** college applications were completed



High School Academics

- **97%** of graduates were AVID students during their 12th grade year
- **60%** of graduates had a cumulative high school GPA above a 3.0
- **94%** of graduates took the ACT or SAT
- **173** AP Exams taken (**3** AP Scholars, **1** AP Scholar with Honor)



Financial Aid

- **98%** of graduates (96 graduates) have access to financial assistance from the RUP Scholarship Program. Approximately **\$125,000** is scheduled to be awarded
- **59%** of graduates (58 graduates) received other scholarship funding from the local community and their college. Approximately **\$208,400** was awarded to students
- **99%** of graduates completed the FAFSA or Dream Act



Alumni College Persistence

Of the students who attended college after high school graduation and who have enrollment data in the National Student Clearinghouse:

- Class of 2015: 1-year: **91%** (estimated)
- Class of 2014: 1-year: **88%**
- Class of 2013: 1 year: **84%**, 2 year: **75%**
- Class of 2012: 1 year: **86%**, 2 year: **72%**, 3 year: **64%**
- Class of 2011: 1 year: **82%**, 2 year: **70%**, 3 year: **69%**, 4 year: **63%**
- National Average: 1 year: 69%
- 5 Year or Less Post-secondary Graduation Rate:
 - **Class of: 2008:17% 2009: 27% 2010: 29% 2011: 34%**



Destination College

- Total College Graduates: **48**, New College Graduates:

- **3** students graduated with a BA or BS in Fall of 2015: **Ruby Canchola, Jessica Patino, Lucero Guerrero.**
- **8** students graduated with a BA or BS in May 2016! Congratulations to: **Sarah Durham, Maritza Ortiz, Maria Dominguez, David Vinas, Irene Gomez, Bianca Ramirez, Julio Rodriguez, Reina Huerta Roman.**

***data as of August 2016, National averages based on similar demographics. Pictures courtesy of the Press Democrat*

Roseland University Prep Historical College Prep Data										
	2008	2009	2010	2011	2012	2013	2014	2015	2016	Total/Average
Number of graduates	59	50	54	67	72	94	78	107	98	679
Graduation Rate	95%	98%	95%	99%	91%	99%	95%	93%	96%* (TBD)	96%
College Breakdown										
Attending SSU	36%	26%	13%	24%	17%	27%	28%	8%	17%	22%
	21	13	7	16	12	25	22	9	17	142
Attending other CSU's				12%	10%	11%	14%	28%	24%	
Attending UC					6%	9%	12%	8%	12%	
Attending other universities (private and out of state)	15%	28%	20%	6%	6%	0%	1%	3%	1%	
Attending vocational school	0%	0%	0%	1%	1%	0%	0%	1%	2%	
Attending SRJC or other JC's	49%	38%	54%	57%	58%	49%	45%	50%	39%	49%
	29	19	29	38	42	46	35	54	38	330
Enrolled in Military	0%	0%	0%	0%	1%	1%	0%	2%	0%	
College Attendance										
Attending 4 year university	51%	54%	33%	42%	38%	48%	58%	47%	55%	47%
	30	27	18	28	27	45	45	50	54	325
Percent accepted into a 4 year university								56%	61%	
Students who met the subject requirements to attend UC/CSU	53%	65%	60%	52%	64%	67%	62%	65%	69%	62%
	31	33	32	35	46	63	48	70	68	426
Attending 2 or 4 year university	100%	92%	87%	99%	97%	97%	100%	97%	94%	96%
	59	46	47	66	70	91	78	104	92	653
Demographics-Hispanic/Latino Graduates										
Attending a 4 year university	50%	38%	33%	45%	36%	47%	63%	43%	55%	46%
Graduates who met the subject requirements to attend UC/CSU	53%	63%	62%	53%	64%	66%	62%	63%	70%	62%
High School Academics										
Graduates who were AVID students	32%	44%	47%	60%	53%	97%	100%	100%	97%	
Graduates who had a cumulative high school GPA above a 3.0	41%	42%	38%	43%	43%	52%	51%	40%	60%	
Percent of students who took at least 1 AP Exam	37%	36%	28%	43%	79%	82%	90%	71%	64%	
Percent of students who took the ACT/SAT	98%	94%	69%	72%	68%	84%	82%	84%	94%	
Financial Aid										
Graduates were awarded financial assistance from RUP Scholarship Program	66%	74%	65%	70%	67%	85%	95%	79%	99%	
Amount awarded from RUP Scholarship Program (for Freshman year)	\$154,441	\$105,721	\$78,188	\$114,964	\$142,000	\$116,000	\$93,974	\$93,974	\$125,000	\$1,024,262
Graduates who received funding from other scholarships				22%	25%	43%	37%	40%	59%	
Amount awarded from other funding sources					\$194,400	\$80,400	\$95,650	\$240,250	\$208,400	
FAFSA Completion										
FAFSA Applications # Submitted				49	55	75	69	92	74	
FAFSA Applications Complete				46	50	69	69	89	74	
				69%	69%	73%	100%	97%	100%	
Dream Act Applications Submitted							9	15	23	
Dream Act Applications Complete							9	15	23	
							100%	100%	100%	
% of graduates who completed the FAFSA or Dream Act				69%	69%	73%	100%	97%	99%	
Through College Mentors										
Number of Junior Mentors					NA	NA	35	38	36	
Number of Senior Mentors					43	49	34	38	35	
Number of Alumni Mentors					NA	13	50	28	20	
Alumni										
Number of students in online database				69	108	226	299	461	TBD	
Alumni who have enrollment data for previous Spring or graduated with AA or Bachelor's		73%	64%	91%	85%	66%	63%	64%	TBD	
				63	92	149	189	295	TBD	
% of students who enrolled in College the Fall immediately after High School (According to Naviance)**	71%	72%	60%	71%	69%	89%	76%	79%	TBD	
% of students who enrolled in College in the first year after High School (According to Naviance)**	75%	74%	66%	85%	75%	89%	82%	82%	TBD	
1 year Persistence Rate for each class (of students we have data for)	74%	92%	80%	83%	86%	83%	89%	TBD	TBD	
2 year Persistence Rate for each class (of students we have data for)	60%	73%	76%	73%	73%	TBD	TBD	TBD	TBD	
3 year Persistence Rate for each class (of students we have data for)	64%	65%	66%	68%	TBD	TBD	TBD	TBD	TBD	
Number of alumni who graduated from college (year reflects the college graduation year)					5	3	15	17	8	48

*Projected graduation rate

**This data does not count AB540 or students who do not "Match" in the system as enrolled.

ROSELAND UNIVERSITY PREP COLLEGE GRADUATES



Trina Abayon ('09). Franciscan University. BS, Nursing. Searching for a Nursing Residency Program.

Fernando Carranza ('10). University of the Pacific ('14). BS, Computer Science. Cloud Operations Developer at IBM.

Eloy Camacho ('10). Sonoma State University ('14). BA, Communications, Promotions Team at MiX 104.9.

Ruby Canchola ('09). San Jose State University ('15). BS, Nutritional Science/Dietetics



Janice Castro ('11). University of California, Los Angeles ('15). BS, Anthropology, Minor in Labor and Work Place.

Chicanos/Latinos for Community Medicine. Venice Family Clinic, EMR Trainer (Electronic Medical Records).

Roberto Castro ('08). University of Hawaii, Manoa ('14). Masters of Education in Special Education. University of California, Merced ('12). BS, Biological Sciences, Minor in Psychology. High School Teacher with Teach for America.

Adriana Chavez ('09). Sonoma State University ('14). BA, Sociology. Medical Receptionist for Vista Family Health Clinic. Plans to complete a Masters in Social Work.



Mireya Chavez ('11). Sonoma State University ('15). BA, Criminal Justice, Minor in Spanish.

Lupe Cornejo ('10). Dominican University of California ('14). BA, Women and Gender Studies and International Studies with a focus in Latin America. Hudson Vineyards. Personal Assistant

Sandra Cuevas ('11). St. Mary's College of California ('15). BS, Psychology. Arts for Oakland Kids! AmeriCorps.



Maria Dominguez ('11). Sonoma State University ('16). BS, Chicano Latino Studies and Spanish. Teacher in Spain.

Sarah Durham ('09). Sonoma State University ('16). BA, Music in Applied Music (Performance). Applying to Graduate Schools. Working at Green Music Center.

Yadira Esparza ('09). Sonoma State University ('14). BA, Criminology and Criminal Justice, Minor in Psychology. Family Justice Center of Sonoma County.



Nataly Estupiñan ('10). Sonoma State University ('14). BA, English. Reading Mentor. Enrolled in Credential Program.

Cris Fertino ('08). University of California, Riverside ('12). BA, Public Policy. Case Manager at Kerosky, Purves & Bogue.

Alan Flores ('09). Sonoma State University ('13). BS, Business Administration with a concentration in Business Management. Small Business Owner. www.alanfloresins.com

ROSELAND UNIVERSITY PREP COLLEGE GRADUATES



Lucero Guerrero ('11). Sonoma State University ('15). BA, Sociology and Spanish. Migrant Education

Irene Gomez ('12). Sonoma State University ('16). BA, Psychology. Auditioning for Professional Dance Companies. Planning to attend Graduate School for a Masters in Psychology.



Mehari Haile ('10). St. Mary's College of California ('14). BA, Sociology. Santa Rosa Junior College Health Center.

Amanda Hernandez ('08). Gonzaga University ('12). BA, Psychology. Kerosky, Purvse & Bogue. Immigration Law. Enrolled in Masters program for Non-profit Management. School Board member for Roseland School District.



Moriah Hernandez ('09). Willamette University ('13). BA, Studio Arts, Minor in Mathematics. Attending Graduate School. University of Connecticut. Masters of Education in Higher Education and Student Affairs.

Reina Huerta Roman ('09). San Francisco State University ('09). BA, Latino/a Students, minor in Health Education. Pharmacy Operations Coordinator. Applying for graduate programs for a Masters in Public Health.

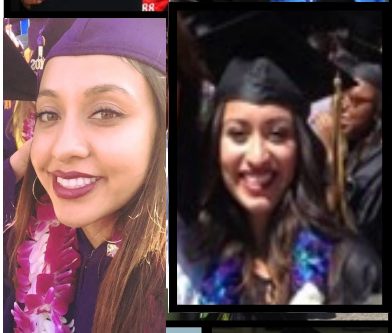
Edith Jimenez ('11). University of California, Davis ('15). BA, Political Science Public Service.

Gerald Jones ('08). University of the Pacific ('12). BA, Sociology. Fair Housing Napa Valley and writing articles for ThisIsVallejo.com (covering Business and Entrepreneurship in Vallejo).



Jackie Leon ('11). Sonoma State University ('15). BA, Sociology, Minor in Spanish. Case Manager, Sonoma County.

Cristian Martinez ('11). Sonoma State University ('15). BA, Economics. Plans to pursue a PhD program in Economics.



Joanna Martinez ('08). University of California, Berkeley ('13). BA, Sociology, Minor in African American Studies. Teen Center Coordinator/Case Manager at Berkeley Youth Alternatives.

Maria Martinez ('09). Sonoma State University ('15). BA, Sociology. AA in Sociology and Behavioral Sciences and Admin of Justice.

Natalia Marquez ('10). Sonoma State University ('15). BA, Spanish. Applying to Nursing Programs.



Cristo Mendoza ('09). Sonoma State University ('14). BA, Criminal Justice, Minor in Environmental Studies. Student Services Manager at Roseland Collegiate Prep.

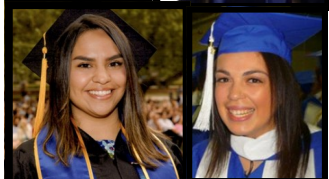
Edgar Navarro ('09). Sonoma State University ('15). BA, History. Instructional Assistant at Roseland Creek Elementary.

Pablo Ochoa ('11). University of Nevada, Reno ('15). BS, Neuroscience.

ROSELAND UNIVERSITY PREP COLLEGE GRADUATES



Maritza Ortiz ('10). Chico State University ('16). BA, Social Work and Sociology. Community Action Partnership, Roseland Community Building Initiative Lead Coordinator.



Sulen Palomera ('09). San Francisco State University ('14). BA, Marketing. Scott B. Price Accounting Firm.

Nadia Paniagua ('10). Sonoma State University ('14). BA, Sociology and Women and Gender Studies. Attending Graduate School at Sacramento State University.



Jessica Patino ('11). Sonoma State University ('15). BA, Sociology.

Yanet Peralta ('11). Sonoma State University ('15). BA, Spanish.



Mireya Pinell-Cruz ('10). University of California, San Diego ('14). BA, International Studies (tracks: Anthropology and Political Science) and Linguistics/Language Studies (concentration: Spanish).

Bianca Ramirez ('12). University of California, Irvine ('16). BA, Public Health Policy, minor in Spanish. Commissioned into United States Army Reserves. Second Lieutenant Medical Services Officer. Attending graduate school for Masters in Public Health Policy.



Ruben Rangel ('08). Sonoma State University ('13). BA, History. Bridging Worlds Behavior Services with Autism Support, Behavioral Tutor.

Jimmie Roberts ('10). University of the Pacific ('14). BS, Business Administration with a concentration in Finance. Credit Analyst for F&M Bank.



Julio Rodriguez ('11). University of California, Los Angeles ('16). BA, Sociology.

Rubi Rodriguez ('09). San Francisco State University ('14). BA, Psychology. Bridging Worlds Behavior Services with Autism Support, Behavioral Tutor.



Juanita Tenorio ('09). Sonoma State University ('14). BA, Sociology and Women and Gender Studies. Nursing Department at SSU, Office Admin Assistant.

Christina Tlatilpa ('11). Cal Poly, San Luis Obispo ('15). BA

Vanessa Villafuerte ('08). Sonoma State University ('12). BA, Communication Studies. National Coordinator for Univision.

David Vinas ('11). Sonoma State University ('16). BA, Spanish and History. Academic Talent Search Mentor. Applying to Credential Program.

Mario Yopez-Olvera ('11). University of California, Davis ('15). BA, Computer Science. Cisco Systems.

