

ROSELAND UNIVERSITY PREP

CLASS OF 2017 ACCOMPLISHMENTS



Of the 101 graduates of the Class of 2017...

- **11%** are attending Sonoma State University
- **22%** are attending other CSU's (*Chico State, Channel Islands, Dominguez Hills, Fullerton, Stanislaus, Humboldt, Sacramento State, San Diego, San Francisco State*)
- **11%** are attending a UC (*Davis, Riverside, San Diego, Santa Barbara*)
- **4%** are attending private or out of state universities
- **1%** are attending a vocational school
- **54%** are attending SRJC or other JCs



College Attendance

Of the graduates...

- **44%** are attending a 4-year University
- **55%** met the subject requirements to attend a UC/CSU
- **58%** were accepted into a 4-year University
- **97%** are attending a 2 or 4-year University *National Average: 51%*
- **438** college applications were completed



High School Academics

- **92%** of graduates were AVID students during their 12th grade year
- **44%** of graduates had a cumulative high school GPA above a 3.0
- **91%** of graduates took the ACT or SAT
- **68%** of graduates took at least one AP Exam (**3** AP Scholars, 146 AP exams taken)



Financial Aid

- **97%** of graduates (96 graduates) have access to financial assistance from the RUP Scholarship Program. Approximately **\$150,000** is scheduled to be awarded
- **52%** of graduates (58 graduates) received other scholarship funding from the local community and their college. Approximately **\$202,400** was awarded to students
- **100%** of graduates completed the FAFSA or Dream Act

Alumni College Persistence

Of the students who attended college after high school graduation and who have enrollment data in the National Student Clearinghouse:

- Class of 2016: 1-year: **85%** (estimated)
- Class of 2015: 1-year: **82%**
- Class of 2014: 1 year: **88%**, 2 year: **75%**
- Class of 2013: 1 year: **84%**, 2 year: **75%**, 3 year: **68%**
- Class of 2012: 1 year: **86%**, 2 year: **72%**, 3 year: **64%**, 4 year: **59%**
- National Average: 1 year: 69%
- 6 Year or Less Post-secondary Graduation Rate:
 - **Class of: 2008:19% 2009: 32% 2010: 32% 2011: 47%**
(2011 was the first class matched with Through College Mentors)
- **68** College Graduates since 2012, New College Graduates in 2017:
 - **2** students graduated with a BA or BS in Fall of 2016: **Diana Gonzalez**,
 - **16** students graduated with a BA or BS in May 2017! Congratulations to: **Mariela Vigil, Minh Cao, Quan Pham, Selene Cazarez, Melissa Chavez, Rafael Farias, Brenda Martin, Rigoberto Moreno, Gloria Paniagua, Jose Guzman, Jessica Maldonado, Liliana Jasso, Zully Santos, Viridiana Delgado, Nelly Gudino, Melawit Tekeste**
 - 1 new master's degree: **Amanda Hernandez, M.A. Non-profit Management**



Roseland University Prep Historical College Prep Data

	2008	2009	2010	2011	2012	2013	2014	2015	2016	2017	Total/Average
Number of graduates	59	50	54	67	72	94	78	107	98	101	780
Graduation Rate	95%	98%	95%	99%	91%	99%	95%	93%	91%*		96%
College Breakdown											
Attending SSU	36%	26%	13%	24%	17%	27%	28%	8%	17%	11%	21%
Attending other CSU's	21	13	7	16	12	25	22	9	17	11	153
Attending UC				12%	10%	11%	14%	28%	24%	22%	
Attending other universities (private and out of state)	15%	28%	20%	6%	6%	0%	1%	3%	1%	4%	
Attending vocational school	0%	0%	0%	1%	1%	0%	0%	1%	2%	1%	
Attending SRJC or other JC's	49%	38%	54%	57%	58%	49%	45%	50%	39%	54%	49%
Enrolled in Military	29	19	29	38	42	46	35	54	38	54	384
	0%	0%	0%	0%	1%	1%	0%	2%	0%	0%	
College Attendance											
Attending 4 year university	51%	54%	33%	42%	38%	48%	58%	47%	55%	44%	47%
Percent accepted into a 4 year university	30	27	18	28	27	45	45	50	54	43	368
Students who met the subject requirements to attend UC/CSU	53%	65%	60%	52%	64%	67%	62%	65%	69%	55%	61%
	31	33	32	35	46	63	48	70	68	55	481
Attending 2 or 4 year university	100%	92%	87%	99%	97%	97%	100%	97%	94%	97%	96%
	59	46	47	66	70	91	78	104	92	97	750
Demographics-Hispanic/Latino Graduates											
Attending a 4 year university	50%	38%	33%	45%	36%	47%	63%	43%	55%	44%	45%
Graduates who met the subject requirements to attend UC/CSU	53%	63%	62%	53%	64%	66%	62%	63%	70%	50%	61%
High School Academics											
Graduates who were AVID students	32%	44%	47%	60%	53%	97%	100%	100%	97%	92%	
Graduates who had a cumulative high school GPA above a 3.0	41%	42%	38%	43%	43%	52%	51%	40%	60%	44%	
Percent of students who took at least 1 AP course	37%	36%	28%	43%	79%	82%	90%	71%	64%	68%	
Percent of students who took the ACT/SAT	98%	94%	69%	72%	68%	84%	82%	84%	94%	91%	
Financial Aid											
Graduates were awarded financial assistance from RUP Scholarship Program	66%	74%	65%	70%	67%	85%	95%	79%	99%	97%	
Amount awarded from RUP Scholarship Program (for Freshman)	\$154,441	\$105,721	\$78,188	\$114,964	\$142,000	\$116,000	\$93,974	\$93,974	\$125,000	\$150,000	\$1,174,262
Graduates who received funding from other scholarships				22%	25%	43%	37%	40%	59%	52%	
Amount awarded from other funding sources			35	47	48	80	74	85	97	97	563
				15	18	40	29	43	58	52	255
					\$194,400	\$80,400	\$95,650	\$240,250	\$208,400	\$202,400	\$1,021,500
FAFSA Completion											
FAFSA Applications # Submitted				49	55	75	69	92	74	90	
FAFSA Applications Complete				46	50	69	69	89	74	90	
Dream Act Applications Submitted				69%	69%	73%	100%	97%	100%	100%	
Dream Act Applications Complete							9	15	23	14	
% of graduates who completed the FAFSA or Dream Act				69%	69%	73%	100%	97%	99%	100%	
Through College Mentors											
Number of Junior Mentors					NA	NA	35	38	36		
Number of Senior Mentors					43	49	34	38	35		
Number of Alumni Mentors					NA	13	50	28	20		
Alumni											
Number of students in online database				69	108	226	299	461	TBD	TBD	
Alumni who have enrollment data for previous Spring or graduated with AA or		73%	64%	91%	85%	66%	63%	64%	TBD	TBD	
% of students who enrolled in College the Fall immediately after High School (According to Naviance)**				63	92	149	189	295			
% of students who enrolled in College in the first year after High School (According to Naviance)**	71%	72%	60%	71%	69%	89%	76%	79%	TBD	TBD	
1 year Persistence Rate for each class (of students we have data for)	74%	92%	80%	83%	86%	83%	89%	82%	TBD	TBD	
2 year Persistence Rate for each class (of students we have data for)	60%	73%	76%	73%	73%	75%	75%	TBD	TBD	TBD	
3 year Persistence Rate for each class (of students we have data for)	64%	65%	66%	68%	64%	68%	TBD	TBD	TBD	TBD	
Number of alumni who graduated from college (year reflects the college graduation year)					5	3	15	17	10	18	68

*Note that 6% of students in the class of 2016 did not graduate but were still enrolled in high school, taking some extra time to complete high school

**This data does not count AB540 or students who do not "Match" in the system as enrolled.

ROSELAND UNIVERSITY PREP COLLEGE GRADUATES



Trina Abayon ('09). Franciscan University. BS, Nursing. Registered Nurse at Sutter Health

Fernando Carranza ('10). University of the Pacific ('14). BS, Computer Science. Cloud Operations Developer at IBM.

Eloy Camacho ('10). Sonoma State University ('14). BA, Communications, Promotions Team at MiX 104.9.

Ruby Canchola ('09). San Jose State University ('15). BS, Nutritional Science/Dietetics



Janice Castro ('11). University of California, Los Angeles ('15). BS, Anthropology, Minor in Labor and Work Place. Venice Family Clinic, EMR Trainer (Electronic Medical Records).

Roberto Castro ('08). University of Hawaii, Manoa ('14). Masters of Education in Special Education. University of California, Merced ('12). BS, Biological Sciences, Minor in Psychology. High School Teacher with Teach for America.

Minh Cao ('13). University of California, Davis. ('17). BS, Biochemistry and Molecular Biology.

Selene Cazarez ('13). Sonoma State University. ('17). BA, Spanish.



Adriana Chavez ('09). Sonoma State University ('14). BA, Sociology. Medical Receptionist for Vista Family Health Clinic. Plans to complete a Masters in Social Work.

Melissa Chavez ('13). Sonoma State University. ('17). BA, Criminal Justice

Mireya Chavez ('11). Sonoma State University ('15). BA, Criminal Justice, Minor in Spanish.



Lupe Cornejo ('10). Dominican University of California ('14). BA, Women and Gender Studies and International Studies with a focus in Latin America. Immigration Representative Assistant, Catholic Charities.

Sandra Cuevas ('11). St. Mary's College of California ('15). BS, Psychology. Arts for Oakland Kids! AmeriCorps.



Viridiana Delgadillo. ('13). University of California, Irvine. ('17). BA, Psychology

Maria Dominguez ('11). Sonoma State University ('16). BS, Chicano Latino Studies and Spanish. Teacher in Spain.

Sarah Durham ('09). Sonoma State University ('16). BA, Music in Applied Music (Performance). Applying to Graduate Schools. Working at Green Music Center.

ROSELAND UNIVERSITY PREP COLLEGE GRADUATES



Yadira Esparza ('09). Sonoma State University('14). BA, Criminology and Criminal Justice, Minor in Psychology. Policy Academy.

Nataly Estupiñan ('10). Sonoma State University('14). Teaching Credential, Secondary English. BA, English. AVID and ELD Teacher at Healdsburg High School.



Rafael Farias ('11). Sonoma State University. ('17). BA

Cris Fertino ('08). University of California, Riverside ('12). BA, Public Policy. Case Manager at Kerosky, Purves& Bogue.

Alan Flores ('09). Sonoma State University ('13). BS, Business Administration with a concentration in Business Management. Small Business Owner. www.alanfloresins.com . Roseland Charter School Board Member.



Lucero Guerrero ('11). Sonoma State University ('15). BA, Sociology and Spanish. Migrant Education

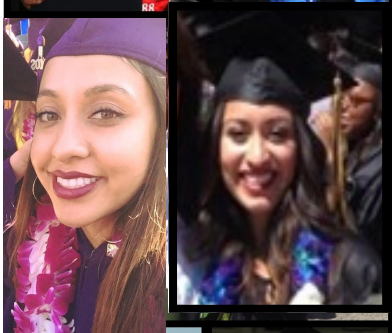
Irene Gomez ('12). Sonoma State University ('16). BA, Psychology. Auditioning for Professional Dance Companies. Planning to attend Graduate School for a Masters in Psychology.

Nelly Gudino ('13). University of California, Santa Cruz. ('17). BA, Sociology



Jose Guzman ('10). San Jose State University. ('17). BA, Business Management. Microsoft.

Mehari Haile ('10). St. Mary's College of California ('14). BA, Sociology. Santa Rosa Junior College Health Center. Starting Nursing School.



Amanda Hernandez ('08). Regis University ('17) MA, Non-profit Management. Gonzaga University ('12). BA, Psychology. Case Manager at Social Advocates for Youth. School Board member for Roseland School District.

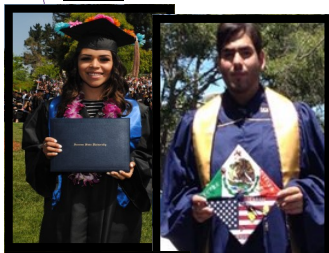
Moriah Hernandez ('09). Willamette University ('13). BA, Studio Arts, Minor in Mathematics. Attending Graduate School. University of Connecticut. Masters of Education in Higher Education and Student Affairs.



Reina Huerta Roman ('09). San Francisco State University ('09). BA, Latino/a Students, minor in Health Education. Pharmacy Operations Coordinator. Attending UCSF for a masters in Health Policy and Law.

Liliana Jasso ('13). Humboldt State University . ('17). BA, Social Work

ROSELAND UNIVERSITY PREP COLLEGE GRADUATES



Edith Jimenez ('11). University of California, Davis ('15). BA, Political Science Public Service.

Gerald Jones ('08). University of the Pacific ('12). BA, Sociology. 2nd year Law Student at Santa Clara University.

Jackie Leon ('11). Sonoma State University ('15). BA, Sociology, Minor in Spanish. Case Manager, Sonoma County.



Jessica Maldonado ('13). San Jose State University. ('17). BA, Sociology

Cristian Martinez ('11). Sonoma State University ('15). BA, Economics. Plans to pursue a PhD program in Economics.



Joanna Martinez ('08). University of California, Berkeley ('13). BA, Sociology, Minor in African American Studies. Teen Center Coordinator/Case Manager at Berkeley Youth Alternatives.

Maria Martinez ('09). Sonoma State University ('15). BA, Sociology. AA in Sociology and Behavioral Sciences and Admin of Justice.



Natalia Marquez ('10). Sonoma State University ('15). BA, Spanish. Applying to Nursing Programs.

Rigoberto Moreno ('12). Sonoma State University. ('17). BS, Computer Science

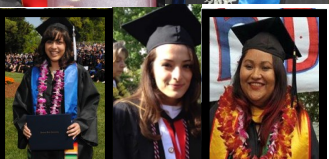
Cristo Mendoza ('09). Sonoma State University ('14). BA, Criminal Justice, Minor in Environmental Studies. Student Services Manager at Roseland Collegiate Prep.



Edgar Navarro ('09). Sonoma State University ('15). BA, History. Instructional Assistant at Roseland Creek Elementary.

Pablo Ochoa ('11). University of Nevada, Reno ('15). BS, Neuroscience.

Maritza Ortiz ('10). Chico State University ('16). BA, Social Work and Sociology. Community Action Partnership, Roseland Community Building Initiative Lead Coordinator.



Sulen Palomera ('09). San Francisco State University ('14). BA, Marketing. Scott B. Price Accounting Firm.



Gloria Paniagua ('13). Sonoma State University. ('17). BA, Women's Studies

Nadia Paniagua ('10). Sonoma State University ('14). BA, Sociology and Women and Gender Studies. Attending Graduate School at Sacramento State University towards a masters in Public Administration.

ROSELAND UNIVERSITY PREP COLLEGE GRADUATES



Jessica Patino ('11). Sonoma State University ('15). BA, Sociology.

Quan Pham ('13). UC Davis ('17). BS, Computer Science.

Yanet Peralta ('11). Sonoma State University ('15). BA, Spanish.

Mireya Pinell-Cruz ('10). University of California, San Diego ('14). BA, International Studies (tracks: Anthropology and Political Science) and Linguistics/Language Studies (concentration: Spanish).



Bianca Ramirez ('12). University of California, Irvine ('16). BA, Public Health Policy, minor in Spanish. Commissioned into United States Army Reserves. Second Lieutenant Medical Services Officer. Pursuing graduate school for Masters in Public Health Policy.

Ruben Rangel ('08). Sonoma State University ('13). BA, History. Bridging Worlds Behavior Services with Autism Support, Behavioral Tutor.

Jimmie Roberts ('10). University of the Pacific ('14). BS, Business Administration with a concentration in Finance. Credit Analyst for F&M Bank.

Julio Rodriguez ('11). University of California, Los Angeles ('16). BA, Sociology. Public Administrator Analyst at UCLA, Urology.



Rubi Rodriguez ('09). San Francisco State University ('14). BA, Psychology. Bridging Worlds Behavior Services with Autism Support, Behavioral Tutor.

Zully Santos ('12). Dominican University ('17). BA, Communications

Melawit Tekeste ('13). University of California, Santa Cruz. ('17). BS, Molecular Cell and Development.

Juanita Tenorio ('09). Sonoma State University ('14). BA, Sociology and Women and Gender Studies. Administrative Assistant SSU School of Science and Technology, Education and Public Outreach Department.

Christina Tlatilpa ('11). Cal Poly, San Luis Obispo ('15). BA

Vanessa Villafuerte ('08). Sonoma State University ('12). BA, Communication Studies. National Coordinator for Univision.



Mariela Vigil ('13). University of California, Davis. ('17). BA, Sociology.

David Vinas ('11). Sonoma State University ('16). BA, Spanish and History. Academic Talent Search Mentor. Applying to Credential Program.

Mario Yopez-Olvera ('11). University of California, Davis ('15). BA, Computer Science. Cisco Systems.